

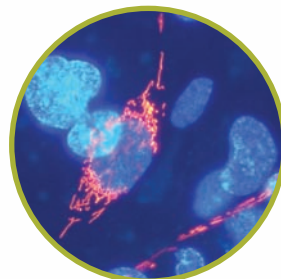
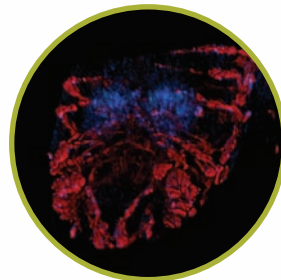
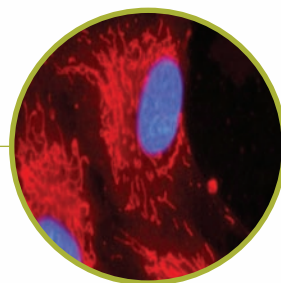
X-Cite® Radiometer

IT JUST KEEPS GETTING BETTER

The X-Cite® Radiometer enables calibration of the X-Cite® *exacte* fluorescence illuminator, for the ultimate in repeatability, stability, control and consistency. Use the Radiometer to instantly upgrade the *exacte* to a new level of performance - and with no other hardware or software required, it could not be easier.

X-Cite® is used and trusted by respected labs and researchers all over the world. Wherever critical microscopy illumination is required, professionals ask for X-Cite®.

Calibrated illumination – for absolute repeatability



EXFO

 **X-Cite®**
—*exacte*

Repeatable, Controlled Output

It is a fact that mercury lamp output degrades over time, and working in relative units (% of lamp output) means intensity settings are not easily repeatable. Calibrate the X-Cite® *exacte* with the X-Cite® Radiometer and set output power in Watts for repeatable intensity levels. This unique feature provides absolute illumination consistency – always.

Why use calibrated illumination?

- Ensure repeatability of experiments, including illumination levels - the heart of great research
- Ideal for applications involving comparisons to control specimens, quantitative images or time-lapse sequences

Use with Multiple Illuminators

One radiometer can be used to calibrate several X-Cite® *exacte* units, making it ideal for normalizing output at imaging facilities employing multiple illuminators.

Preventative Maintenance

Monitoring lamp and light guide degradation allows the timely ordering of replacements.

Calibrated Using Certified Transfer Standard

Radiometer calibrations are traceable to NIST*. Each Radiometer is calibrated according to a strict protocol and accompanied by a certificate of calibration.

SPECIFICATIONS

Wavelength Range	350nm – 675nm (standard calibration) 250nm - 1µm (with custom calibration)
Measurement Range	1mW – 12W
Resolution	1mW
Accuracy	±5% typical
Battery	3.6V Li
Functions	Power Measurement, Irradiance Measurement, Relative/Absolute Modes, X-Cite® <i>exacte</i> Calibration, External Input, Auto Shut-off, Auto Light Guide Detection, Calibration Due Message
Dimensions (L x W x H)	7.5" x 4.5" x 2" / 19cm x 11.5cm x 5cm
Weight	1lb / 450g
Certifications	CE marked, certified to IEC, Canadian and US Standards
Warranty	1 year

* National Institute of Standards and Technology. Calibration of Radiometer is recommended every twelve months. Contact EXFO Life Sciences and Industrial Division for further information.



EXFO Life Sciences & Industrial Division,
2260 Argenta Road, Mississauga, Ontario, L5N 6H7
Tel: +1-905-821-2600 Fax: +1-905-821-2055
Toll Free: 1-800-668-8752
Email: xcite@exfo.com Website: www.exfo-xcite.com

EXFO Electro-Optical Engineering Inc.,
400 Godin Avenue, Vanier, Quebec, G1M 2K2
Tel: +1-418-683-0211 Fax: +1-418-683-2170

PLEASE NOTE: Hg-LAMP CONTAINS MERCURY, Manage in Accord with Disposal Laws, See: www.lamprecycle.org or 1-800-668-8752

EXFO Photonic Solutions Inc. is certified under the ISO 9000 Quality Management System. Our global customers can trust that EXFO strives to be the best possible supplier in all aspects of our business.

EXFO has made every effort to ensure that the information contained in this specification sheet is accurate. However, we accept no responsibility for any errors or omissions, and we reserve the right to modify design, characteristics and products at any time without obligation. Contact EXFO for prices and availability or to obtain the phone number of your local EXFO representative.

X-Cite® is a registered trademark of EXFO Photonic Solutions, Inc. All rights reserved.

