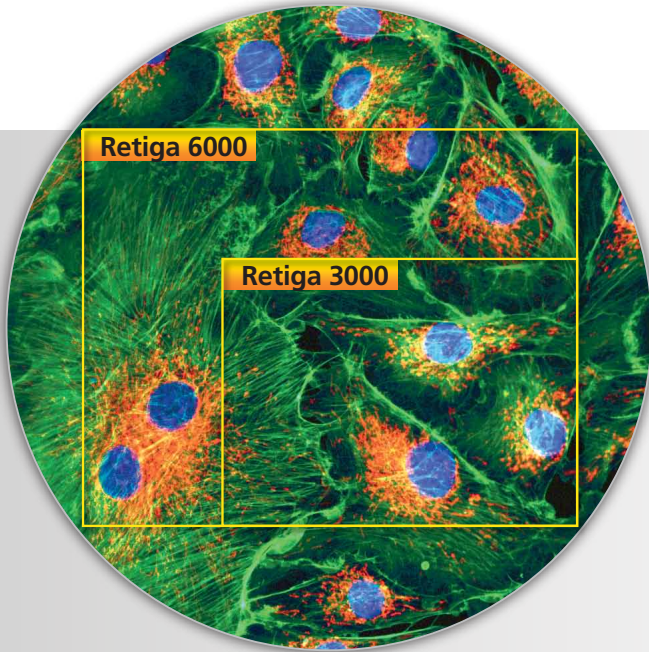


# Introducing the **NEW** **Retiga™ 6000 and Retiga 3000** **Fluorescence Snapshot Cameras** from QImaging

## SEE MORE OF WHAT YOU'RE MISSING!



## Fluorescence Imaging with a Larger Perspective

Capture twice the image area in a single frame

Resolve finer details with lower magnifications

Scan for rare cellular events in less time



The Retiga 6000 offers a large 16 mm Field of View with higher sensitivity and resolution than most standard fluorescence cameras:

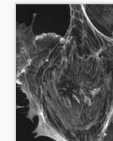
- 6.05 megapixels with 4.54  $\mu\text{m}$  pixels
- 75% peak quantum efficiency



The Retiga 3000 is the budget-friendly alternative, featuring the same high resolution and sensitivity with faster focusing frame rates:

- 2.8 megapixels with 4.54  $\mu\text{m}$  pixels
- 75% peak quantum efficiency

Monochrome or color versions are available. The Retiga 3000 and 6000 cameras use a USB 2.0 data connection for plug-and-play simplicity, and include the easy-to-use QCapture Pro 7™ image acquisition software.



## Applications

- Live Cell Time-Lapse Fluorescence
- Whole Slide Imaging
- Immunofluorescence
- High Content Screening
- Imaging Cytometry



Contact your local Dealer or Imaging Representative  
[www.qimaging.com](http://www.qimaging.com)

DIGITAL IMAGING MADE EASY